

CORRECTION



Correction to: Clinical predictors of mortality due to COVID-19 based on an analysis of data of 150 patients from Wuhan, China

Qirong Ruan^{1,2} , Kun Yang³ , Wenxia Wang⁴ , Lingyu Jiang⁵  and Jianxin Song^{4*} 

© 2020 Springer-Verlag GmbH Germany, part of Springer Nature

Correction to: *Intensive Care Med*

<https://doi.org/10.1007/s00134-020-05991-x>

The original version of this article unfortunately contained mistakes. There is an incorrect unit of IL-6 in Fig. 1 and Supplementary Table 1. It should be pg/mL rather than ng/mL. The corrected Fig. 1 and Supplementary Table 1 can be found below. The authors apologize for the mistakes.

*Correspondence: songsingsjx@sina.com

⁴ Department of Infectious Diseases, Tongji Hospital, Tongji Medical College, Huazhong University of Science and Technology, 1095 Jiefang Avenue, Wuhan 430030, Hubei, China
Full author information is available at the end of the article

The original article can be found online at <https://doi.org/10.1007/s00134-020-05991-x>.

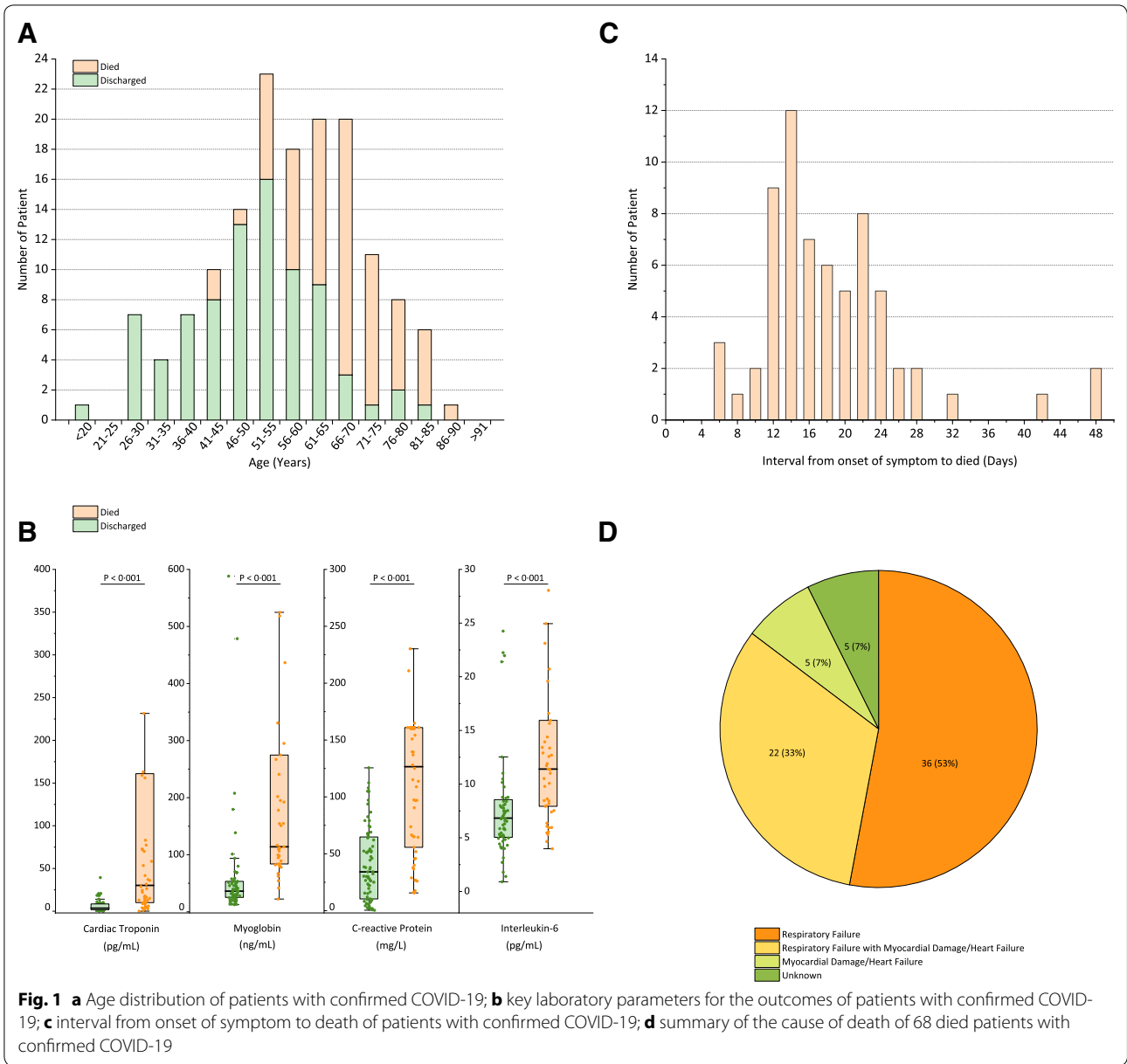


Fig. 1 **a** Age distribution of patients with confirmed COVID-19; **b** key laboratory parameters for the outcomes of patients with confirmed COVID-19; **c** interval from onset of symptom to death of patients with confirmed COVID-19; **d** summary of the cause of death of 68 died patients with confirmed COVID-19

Supplementary Table 1: Summary of clinical features and laboratory results of the patients with confirmed COVID-19

	Normal Range	Died (N = 68)	Discharged (N = 82)	p-value
Demographics				
Age, years		67 (15-81)	50 (44-81)	<0.001
Sex				
Male		49 (72%)	53 (65%)	
Female		19 (28%)	29 (35%)	
Comorbidities				
Hypertension		43 (63%)	34 (41%)	0.01
Cardiovascular disease		29 (43%)	23 (28%)	0.07
Diabetes		13 (19%)	0	<0.001
Cerebrovascular disease		12 (18%)	13 (16%)	0.88
Chronic obstructive pulmonary disease		7 (10%)	5 (6%)	0.49
Chronic kidney disease		2 (3%)	1 (1%)	0.59
Malignancy		2 (3%)	0	0.20
Chronic liver disease		2 (3%)	1 (1%)	0.59
Connective tissue disease		1 (1%)	3 (4%)	0.63
		1 (1%)	0	0.45
Signs and Symptoms				
Fever		59 (87%)	68 (83%)	0.67
Cough		51 (75%)	59 (72%)	0.81
Sputum production		29 (43%)	25 (30%)	0.17
Fatigue		15 (22%)	22 (27%)	0.63
Myalgia		9 (13%)	10 (12%)	1
Haemoptysis		3 (4%)	0	0.09
Dyspnea		59 (87%)	51 (62%)	0.001
Respiratory failure		58 (85%)	13 (16%)	<0.001
ARDS		55 (81%)	7 (9%)	<0.001
Acute kidney injury		21 (31%)	2 (2%)	<0.001
Infection		11 (16%)	1 (1%)	0.002
Treatments				
ICU admission		30 (44%)	11 (13%)	<0.001
High flow nasal cannula		31 (46%)	10 (12%)	<0.001
Non-invasive mechanical ventilation		46 (68%)	5 (6%)	<0.001
Invasive mechanical ventilation		25 (37%)	0	<0.001
ECMO		7 (10%)	0	0.003
CRRT		5 (7%)	0	0.02
Prone position mechanical ventilation		3 (4%)	0	0.09
Antiviral treatment		33 (49%)	55 (67%)	0.05
Antibiotic treatment		63 (93%)	80 (98%)	0.66
Antifungal treatment		12 (18%)	5 (6%)	0.04
Glucocorticoid treatment		31 (46%)	22 (27%)	0.02
Time from onset of symptom to start of Glucocorticoid treatment, days		11.7 (6.9)	11.4 (4.4)	0.89
Time from hospital admission to start of Glucocorticoid treatment, days		1.5 (1.2)	3.2 (2.7)	0.01
Glucocorticoid treatment duration, days		7.2 (6.7)	7.0 (5.0)	0.92
Supportive therapy		45 (66%)	18 (22%)	<0.001
Length of stay, days		7.4 (5.5)	12.3 (4.4)	<0.001
Laboratory Findings				
Time from onset of symptom to test, days		11.6 (6.8)	9.8 (4.3)	0.07
White blood cell count, $\times 10^9/L$	3.50-9.50	10.62 (4.76)	6.76 (3.49)	<0.001
Lymphocyte count, $\times 10^9/L$	1.10-3.20	0.60 (0.32)	1.42 (2.14)	<0.001

	Normal Range	Died (N = 68)	Discharged (N = 82)	p-value
Haemoglobin, g/L	130.0-175.0	127.0 (16.7)	127.6 (16.3)	0.82
Platelet count, $\times 10^9/L$	125.0-350.0	173.6 (67.7)	222.1 (78.0)	<0.001
Albumin, g/L	35.0-52.0	28.8 (3.8)	32.7 (3.8)	<0.001
Alanine aminotransferase, U/L	9.0-50.0	170.8 (991.6)	48.68 (83.1)	0.35
Aspartate aminotransferase, U/L	15.0-40.0	288.9 (1875.5)	40.7 (57.8)	0.31
Total bilirubin, $\mu\text{mol/L}$	0.0-26.0	18.1 (10.7)	12.8 (6.8)	0.001
Blood urea nitrogen, mmol/L	3.1-8.0	8.65 (4.5)	5.11 (2.1)	<0.001
Creatinine, $\mu\text{mol/L}$	59.0-104.0	91.2 (56.2)	72.1 (22.2)	0.02
Creatine kinase, U/L	50.0-310.0	319.4 (838.5)	231.7 (862.3)	0.56
Lactate dehydrogenase, U/L	120.0-250.0	905.8 (2619.1)	297.9 (110.4)	0.08
Cardiac troponin, pg/mL	2.0-28.0	30.3 (151.0)	3.5 (6.2)	<0.001
Myoglobin, ng/mL	0.0-146.9	258.9 (307.6)	77.7 (136.1)	<0.001
C-reactive protein, mg/L	0.0-5.0	126.6 (106.3)	34.1 (54.5)	<0.001
Interleukin-6, pg/mL	0.0-7.0	11.4 (8.5)	6.8 (3.61)	<0.001
Serum ferritin, ng/mL	21.8-274.7	1297.6 (1030.9)	614.0 (752.2)	<0.001

Data are n (%), n/N (%), mean (SD), and median (IQR). When the data were normally distributed, continuous variables were then described using median and interquartile range (IQR) values.

ARDS = acute respiratory distress syndrome. ECMO = extracorporeal membrane oxygenation. ICU = intensive care unit. CRRT = continuous renal replacement therapy.

Electronic supplementary material

The online version of this article (<https://doi.org/10.1007/s00134-020-06028-z>) contains supplementary material, which is available to authorized users.

Author details

¹ Institute of Pathology, Tongji Hospital, Tongji Medical College, Huazhong University of Science and Technology, 1095 Jiefang Avenue, Wuhan 430030, Hubei, China. ² Department of Pathology, School of Basic Medicine, Tongji Medical College, Huazhong University of Science and Technology, 1095 Jiefang Avenue, Wuhan 430030, Hubei, China. ³ Department of Dermatology, Tongji Hospital, Tongji Medical College, Huazhong University of Science and Technology, 1095 Jiefang Avenue, Wuhan 430030, Hubei, China. ⁴ Department of Infectious Diseases, Tongji Hospital, Tongji Medical College, Huazhong

University of Science and Technology, 1095 Jiefang Avenue, Wuhan 430030, Hubei, China. ⁵ Department of Clinical Immunology, Tongji Hospital, Tongji Medical College, Huazhong University of Science and Technology, 1095 Jiefang Avenue, Wuhan 430030, Hubei, China.

Publisher's Note

Springer Nature remains neutral with regard to jurisdictional claims in published maps and institutional affiliations.

Published online: 6 April 2020